



RENEGADE

INDUSTRIAL

Transmission Jack Dual Stage



INSTRUCTION MANUAL

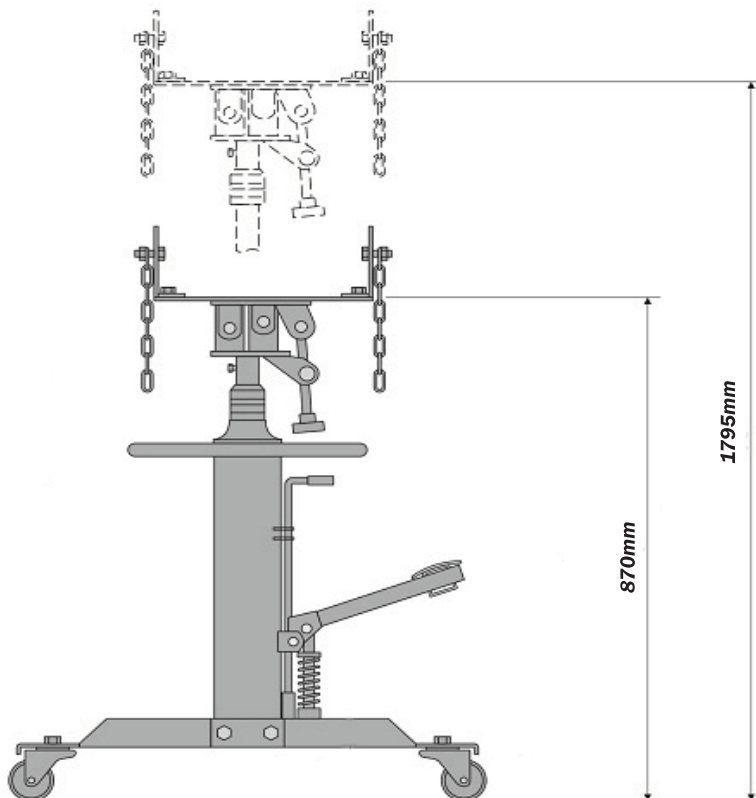


*Read through carefully
and understand these
instructions before use*

SPECIFICATIONS




| Rated load (kg) | Min height of saddle (mm) | Max height of saddle (mm) | Net weight (kg) |
|-----------------|---------------------------|---------------------------|-----------------|
| 500 | 1795 | 870 | 57 |





SAFETY INSTRUCTIONS


The use of a vehicle jack has inherent dangers. To avoid risk of personal injury or property damage make sure you are fully aware of the operating instructions for this product, the recommendations in the vehicle owners manual for jacking of your vehicle prior to lifting the transmission. Do not exceed maximum lifting capacity of this jack. This jack is intended for automotive use only. Be aware that large or heavy transmissions may exceed jack's stated capacity check vehicle owners manual or contact the vehicle manufacturer. Do not use for any other purpose except the raising and lower of transmissions, Never use to raise any structure or building, Do not lift any human load and never ride on jack.


1. Use jack in a suitable work area. Keep the area clean and tidy and free from unrelated materials. Ensure there is adequate lighting.
2. Before use ensure the gearbox weight and size does not exceed the capacity of the jack.
3. Ensure the vehicle is raised and stabilised at the correct height before attempting to move the jack under the vehicle.
4. Ensure the jack saddle is fully lowered and is clean, dry, and oil free before attempting to transport the jack with or without a load.
5. Keep all unauthorised persons away from the jack during lifting and lowering and when in transit.
6. Maintain correct balance and footing. Ensure the floor is not slippery and wear non slip shoes.
7. Remove ill fitting clothing. Remove ties, watches, rings and other loose jewellery, and contain/ tie back long hair.
8. **WARNING!** Ensure that the load is placed level and centrally on the jack saddle and that it is fixed in place before attempting to lift, lower or transport the load.
9. The lowering speed will vary according to the weight of the load and the release valve setting. Diligence is required in ensuring that you continually monitor the operation until completed. Should the jack make any abnormal sounds during use, **STOP IMMEDIATELY** and contact your local service agent.
10. **DO NOT** operate the jack if any parts are damaged or missing.
11. **DO NOT** exceed the rated capacity of the jack.
12. **DO NOT** raise/lower vehicle lifting platform whilst the transmission jack is being used.
13. **DO NOT** transport the jack with the saddle in the raised position, with/without a load.
14. **DO NOT** get the jack wet, or use it in damp or wet locations or areas where there is condensation.
15. **DO NOT** operate the jack when you are tired or under the influence of alcohol, drugs or intoxicating medication.
16. **DO NOT** lift or support vehicles with the jack and do not use the jack as a load sustaining device.
17. **DO NOT** use the jack for any purpose other than removal, transportation and the installation of transmissions.
18. **DO NOT** make any modifications to the jack.
19. **DO NOT** adjust, or tamper with, the safety valve.
20. **DO NOT** remove any labels from the jack.

WARNING  Ensure all preliminary checks are carefully carried out before use of jack. Ensure use of genuine parts only. Non authorised parts may be dangerous and will invalidate the warranty.

WARNING  Use jack on level and solid ground. Ensure the floor over which the jack will be transported is swept clean.

DANGER  **DO NOT** use on asphalt, or any other soft surface as jack may sink or topple. Serious personal or fatal injury may result.

DANGER  If jack tips or leans **STOP WHAT YOU ARE DOING. MOVE QUICKLY TO A SAFE DISTANCE.** **DO NOT TRY TO HOLD OR STEADY JACK.** Serious personal or fatal injury may result.


WARNING  Before use ensure you have read, understood and follow safety instructions.

Positioning Jack beneath load

Before use ensure the transmission weight and size does not exceed the capacity of the jack.

1. Ensure the vehicle from which the gearbox is to be removed is correctly positioned, handbrake applied and raised to allow the transmission jack to be positioned correctly.
2. Ensure there are no other persons around or under the vehicle.
3. Ensure saddle is in its lowest position and use handle to transport and centrally position jack beneath vehicle transmission.
4. Pump the jack foot peddle and the saddle will rise.
5. When saddle is just beneath the transmission re-adjust alignment if necessary to centralise the saddle.

Lowering the load.

WARNING  Ensure the load is central and stable on the jack saddle and load is fixed in place before attempting to lift, lower, or transport.

SLOWLY turn the release valve knob anti-clockwise to GENTLY lower saddle to the lowest minimum height before attempting to transport load.

IMPORTANT: The unit is fitted with a .Dead Man. release valve. The quicker the valve knob is turned the more rapid the jack's descent.

Ensure the jack's descent is slow and controlled to avoid the risk of sudden dropping which could be dangerous. The valve will automatically return to the closed position when the knob is released.

Transporting the load.

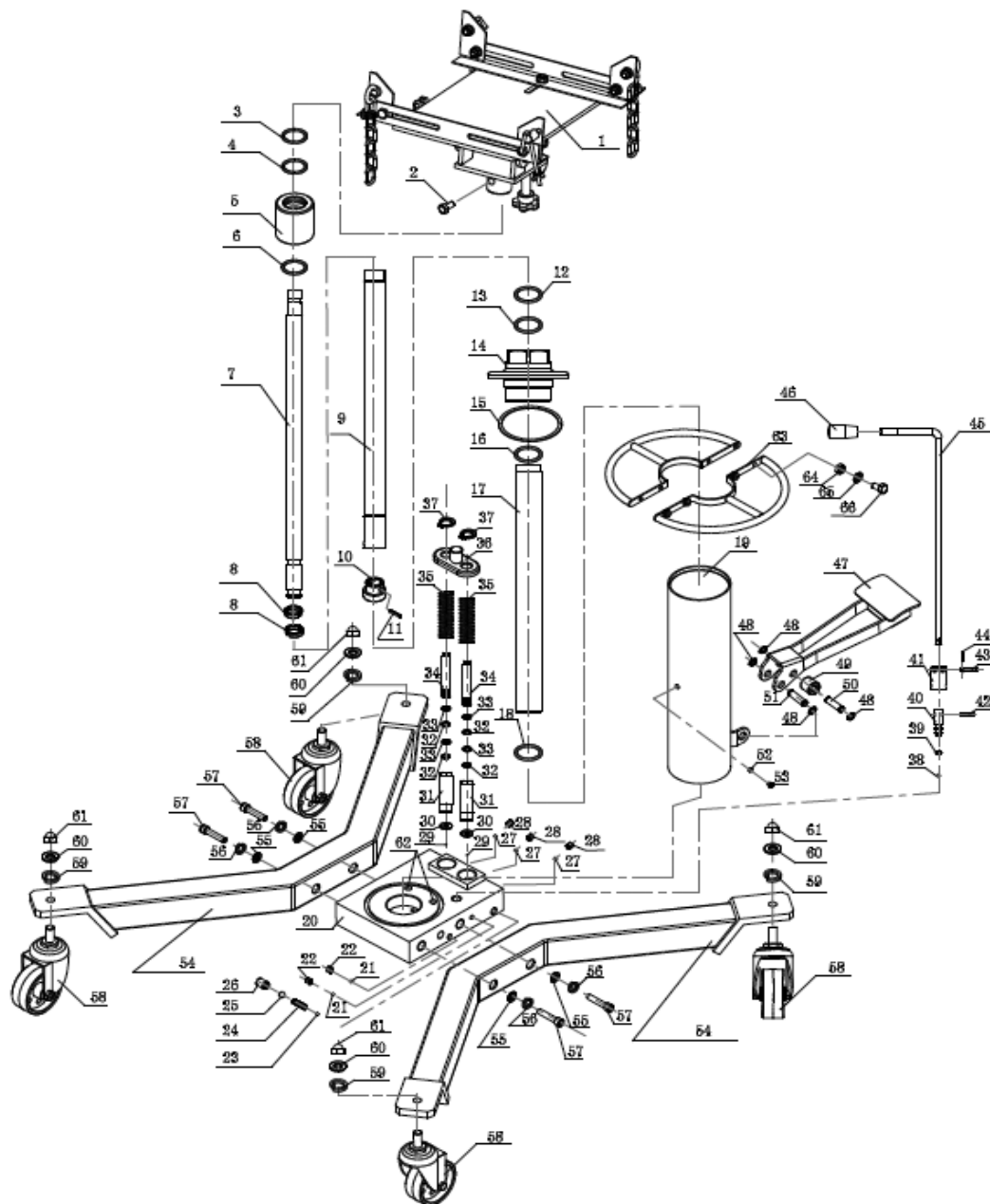
1. Ensure the jack saddle is fully lowered and load is fixed in place before attempting to lift, lower, or transport.
2. Transport the load over level and solid ground, preferably concrete, and ensure the floor is swept clean beforehand
3. Be diligent in continually monitoring the load in transit. keep all other person at a safe distance

CARE & MAINTENANCE

IMPORTANT: Only fully qualified personnel should attempt maintenance or repair.

1. When the jack is not in use, the saddle must be in the lowest position
2. Keep the jack clean and wipe off any oil or grease. Lubricate all moving parts with acid free oil.
3. The oil cylinder is a sealed unit and must not be accessed. For service contact your authorised dealer.
4. Before each use, follow the pre-check list to ensure components are in good working order. If any suspect item is found remove jack from service and take necessary action to remedy the problem.
5. Periodically check the pump piston and piston rod for signs of corrosion. Clean exposed areas with a clean oiled cloth.

DIAGRAM & PARTS LIST



PARTS LIST

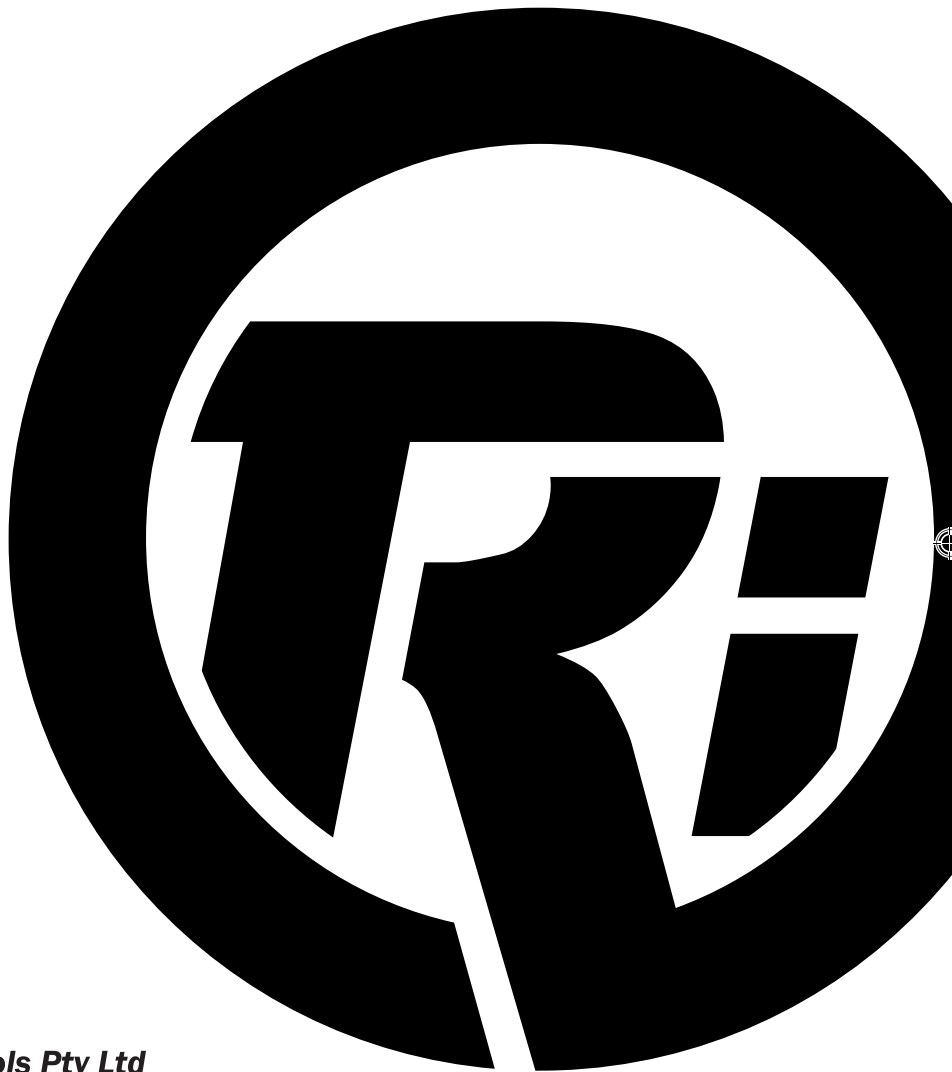


| PART NO | DESCRIPTION | QTY |
|---------|---------------------|-----|
| 1 | Upper unit | 1 |
| 2 | Screw | 1 |
| 3 | O-Ring | 1 |
| 4 | O-Ring | 1 |
| 5 | Small top cap | 1 |
| 6 | O-Ring | 1 |
| 7 | Piston rod | 1 |
| 8 | Piston ring | 2 |
| 9 | Middle cylinder | 1 |
| 10 | Piston | 1 |
| 11 | Piston pin | 1 |
| 12 | O-Ring | 1 |
| 13 | O-Ring | 1 |
| 14 | Big top cap | 1 |
| 15 | Nylon washer | 1 |
| 16 | O-Ring | 1 |
| 17 | Cylinder | 1 |
| 18 | Cylinder washer | 1 |
| 19 | Coat | 1 |
| 20 | Base | 1 |
| 21 | Steel ball | 2 |
| 22 | Steel oil screw | 2 |
| 23 | Steel ball | 1 |
| 24 | Spring | 1 |
| 25 | Steel ball | 1 |
| 26 | Seal oil screw | 1 |
| 27 | Steel ball | 3 |
| 28 | Seal oil screw | 3 |
| 29 | Steel ball | 2 |
| 30 | Pump washer | 2 |
| 31 | Pump body | 2 |
| 32 | O-Ring | 4 |
| 33 | Nylon cotter washer | 4 |

| PART NO | DESCRIPTION | QTY |
|---------|------------------------|-----|
| 34 | Pump core | 2 |
| 35 | Foot pedal spring | 2 |
| 36 | Foot pedal spring seat | 1 |
| 37 | Retainer ring | 2 |
| 38 | Steel ball | 1 |
| 39 | O-Ring | 1 |
| 40 | Oil return valve | 1 |
| 41 | Oil return valve coat | 1 |
| 42 | Round pin | 1 |
| 43 | Round pin | 1 |
| 44 | Cotter pin | 1 |
| 45 | Oil return handle | 1 |
| 46 | Oil return handle coat | 1 |
| 47 | Foot pedal | 1 |
| 48 | Retainer ring | 4 |
| 49 | Roller wheel | 1 |
| 50 | Roller wheel pin | 1 |
| 51 | Pinned shan | 1 |
| 52 | O-Ring | 1 |
| 53 | Screw | 1 |
| 54 | Bottom studs | 2 |
| 55 | Washer | 4 |
| 56 | Spring washer | 4 |
| 57 | Screw | 4 |
| 58 | Caster Wheel | 4 |
| 59 | Spring washer | 4 |
| 60 | Washer | 4 |
| 61 | Round nut | 4 |
| 62 | OP magnet | 2 |
| 63 | Round ring | 1 |
| 64 | Nut | 4 |
| 65 | Washer | 4 |
| 66 | Spring | 4 |

NOTES





TradeTools Pty Ltd
43 Notar Drive
Ormeau, Queensland 4208
P. 07 55406400
www.tradetools.com